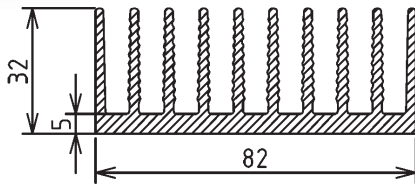


## Standard Heatsinks

(continued)

### KE82/XX Series

**GAMA** aluminium

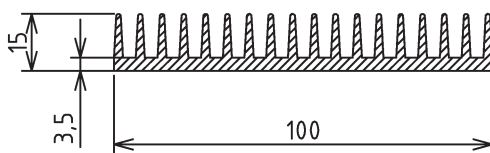
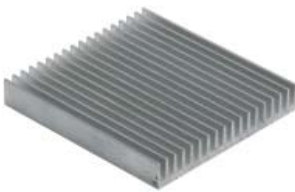


Part No.	Material/Surface Finish	Description
KE82/40AL	aluminium/non-anodised	L=40mm 82x32

Part No.	Ord.No.
S KE82/40AL	65675

### KE100/XX Series

**GAMA** aluminium

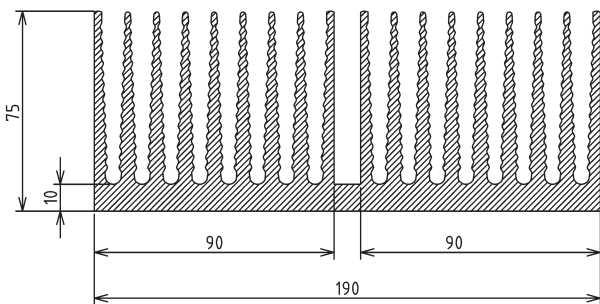


Part No.	Material/Surface Finish	Description
KE100/40AL	aluminium/non-anodised	L=40mm 100x15

Part No.	Ord.No.
o KE100/40AL	65676

### KE190/XX Series

**GAMA** aluminium

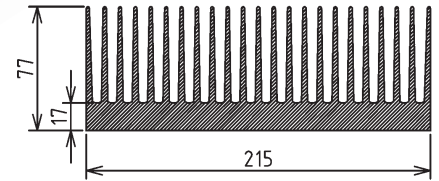
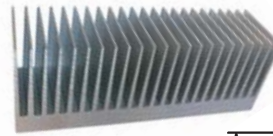


Part No.	Material/Surface Finish	Description
KE190/40AL	aluminium/non-anodised	L=40mm 190x75

Part No.	Ord.No.
o KE190/40AL	65677

### K215/XX Series

**GAMA** aluminium

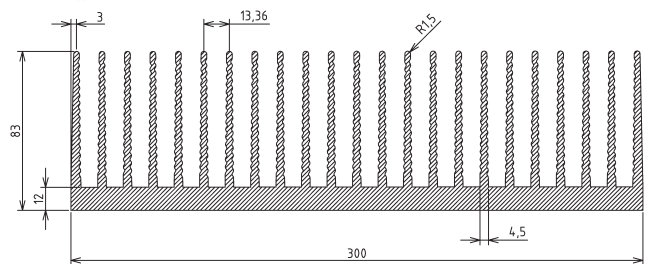


Part No.	Material/Surface Finish	Description
KE215/60AL	aluminium/non-anodised	L=60mm 215x77
KE215/80AL	aluminium/non-anodised	L=80mm 215x77

Part No.	Ord.No.
S KE215/60AL	65757
o KE215/80AL	65834

### KE300/XX Series

**GAMA** aluminium

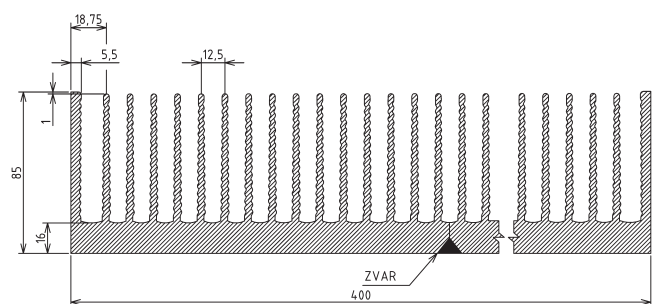


Part No.	Material/Surface Finish	Description
KE300/60AL	aluminium/non-anodised	L=60mm 300x83
KE300/80AL	aluminium/non-anodised	L=80mm 300x83

Part No.	Ord.No.
o KE300/60AL	65758
o KE300/80AL	65835

### KE400/XX Series

**GAMA** aluminium



Part No.	Material/Surface Finish	Description
KE400/60AL	aluminium/non-anodised	L=60mm 400x85
KE400/80AL	aluminium/non-anodised	L=80mm 400x85

Part No.	Ord.No.
o KE400/60AL	65759
o KE400/80AL	65836

Note: Heatsink dimensions are marked in mm.  
Code "AL" - Aluminium/non-anodised,  
Code "BK" - Aluminium Anodised Black.