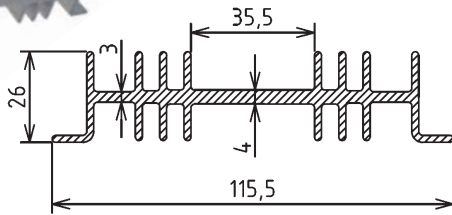
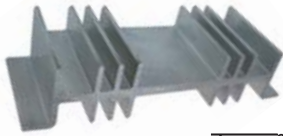


Standard Heatsinks

(continued)

ZH-0136/XX Series

GAMAaluminium

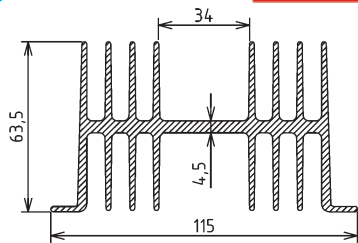


Part No.	Material/Surface Finish	Description
ZH-0136/40AL	aluminium/non-anodised	L=40mm 115,5x26
ZH-0136/80AL	aluminium/non-anodised	L=80mm 115,5x26

Part No.	Ord.No.
S ZH-0136/40AL	65619
S ZH-0136/80AL	65774

ZH-0137/XX Series

GAMAaluminium

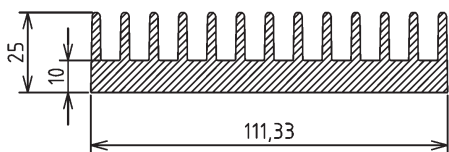
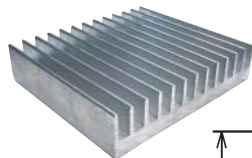


Part No.	Thermal Res.	Mat./Surface Finish	Description
ZH-0137/100AL	1,9K/W/100mm	Al/non-anodised	L=100mm 115x63,5

Part No.	Ord.No.
S ZH-0137/100AL	8076

ZH-0610/XX Series

GAMAaluminium

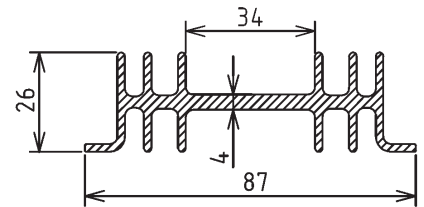


Part No.	Material/Surface Finish	Description
ZH-0610/40AL	aluminium/non-anodised	L=40mm 111,33x25
ZH-0610/100AL	aluminium/non-anodised	L=100mm 111,33x25

Part No.	Ord.No.
O ZH-0610/40AL	65622
S ZH-0610/100AL	8077

ZH-0752/XX Series

GAMAaluminium

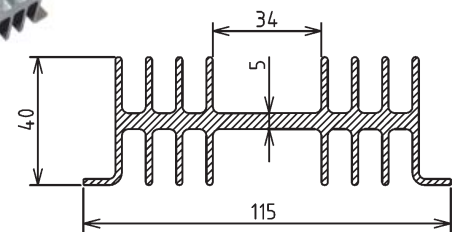


Part No.	Material/Surface Finish	Description
ZH-0752/40AL	aluminium/non-anodised	L=40mm 87x26
ZH-0752/100AL	aluminium/non-anodised	L=100mm 87x26

Part No.	Ord.No.
O ZH-0752/40AL	65623
S ZH-0752/100AL	65854

ZH-0753/XX Series

GAMAaluminium

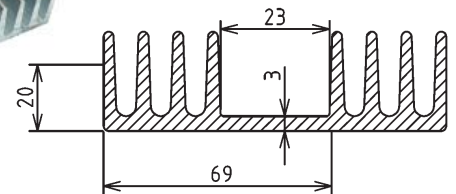
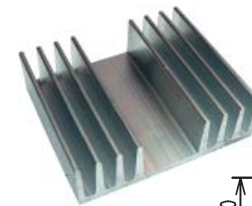


Part No.	Thermal Res.	Mat./Surface Finish	Description
ZH-0753/40AL	1,6K/W/100mm	Al/non-anodised	L=40mm 115x40
ZH-0753/60AL	1,6K/W/100mm	Al/non-anodised	L=60mm 115x40
ZH-0753/100AL	1,6K/W/100mm	Al/non-anodised	L=100mm 115x40
ZH-0753/200AL	1,6K/W/100mm	Al/non-anodised	L=200mm 115x40

Part No.	Ord.No.
O ZH-0753/40AL	65624
S ZH-0753/60AL	65700
S ZH-0753/100AL	8074
S ZH-0753/200AL	8075

ZH-1136/XX Series

GAMAaluminium



Part No.	Material/Surface Finish	Description
ZH-1136/60AL	aluminium/non-anodised	L=60mm 69x20
ZH-1136/100AL	aluminium/non-anodised	L=100mm 69x20

Part No.	Ord.No.
S ZH-1136/60AL	65701
O ZH-1136/100AL	65855

Note: Heatsink dimensions are marked in mm.
Code "AL" - Aluminium/non-anodised,
Code "BK" - Aluminium Anodised Black.